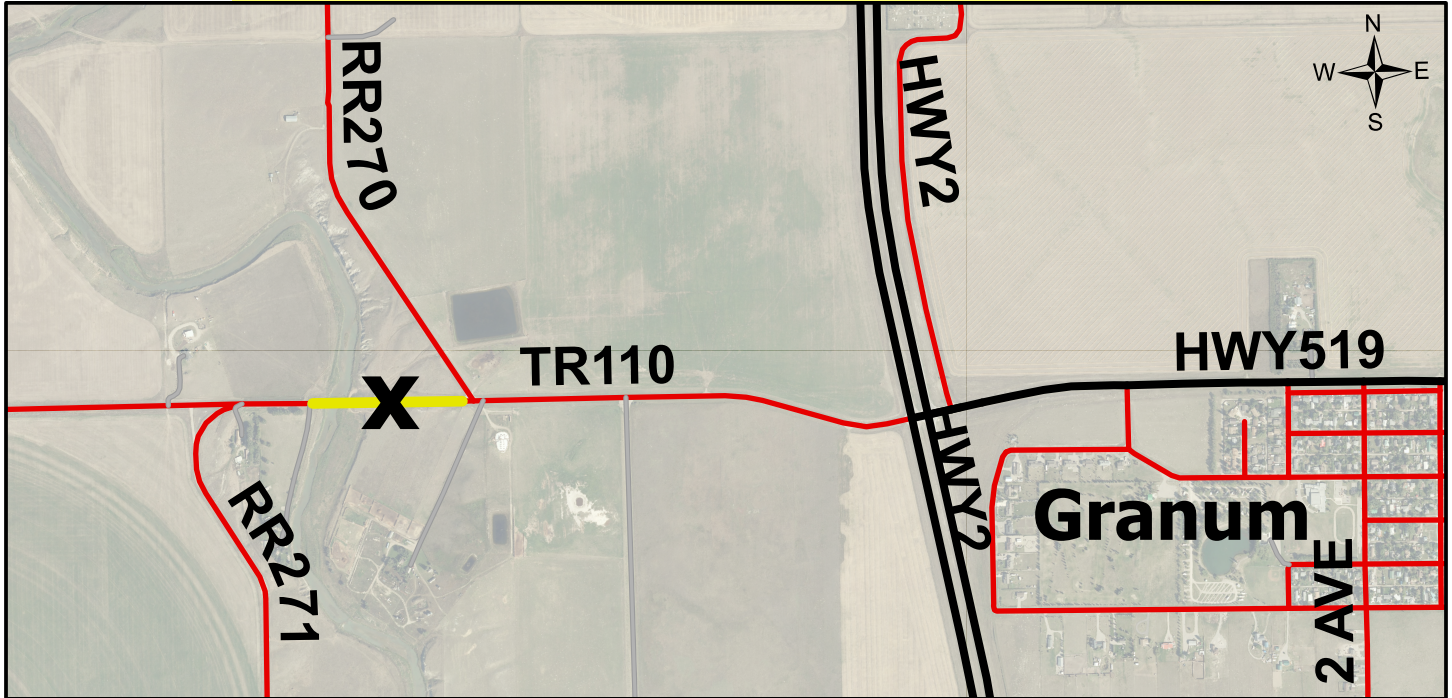




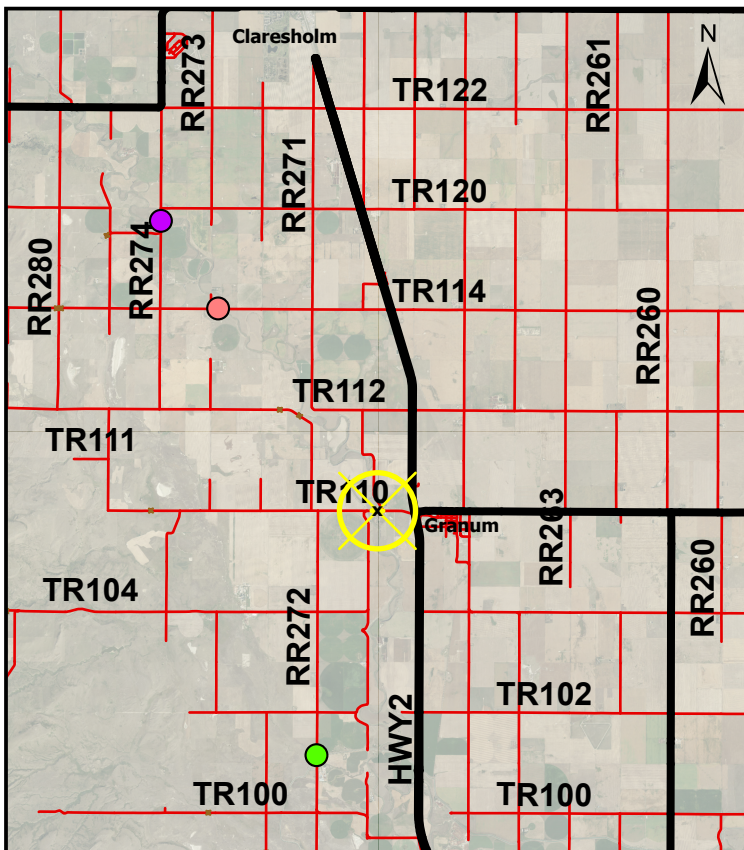
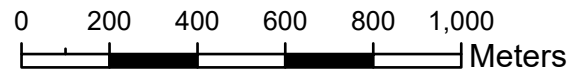
Temporary Road Closure For Bridge Repair



Bridge 1.3 km west of Granum on TR 110 crossing Willow Creek will be closed for repair on January 13, 2026 - January 30, 2026.



- Provincial Road
- Private Driveway
- MD Road
- Temporary Bridge Closure



Alternate routes for bridges crossing Willow Creek are via:

- RR 274 Between TR 115A & 120
- Meadow Creek Road (TR114) Between RR 271 & 273
- RR 272 Between TR 100 & 102

