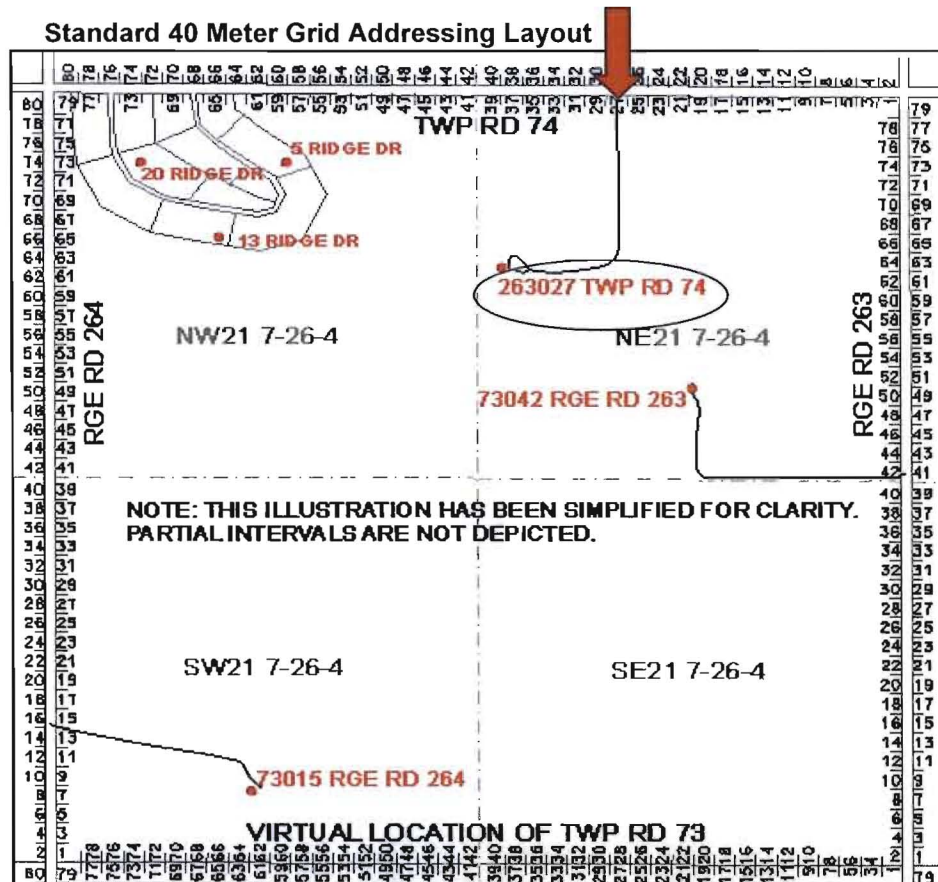


IF YOUR DRIVEWAY MEETS A TOWNSHIP ROAD (see illustration & steps below)



1. Start at the eastern intersection of the Rge Rd and Twp Rd you are located on (Rge Rd 263 and Twp Rd 74). The Rge Rd represents the first characters of your Municipal Address.

263

2. The 0 represents a character to separate the Rge Rd and 40 meter interval number.

0

3. Going WEST from the intersection towards the residence count the number of 40 meter intervals it takes to reach your driveway. The number of intervals represents the location along the Twp Rd (even numbers on the north side of the road and odd numbers on the south side of the road). We have determined the number of 40 meter intervals through the use of our GIS system. In this example, the driveway is fourteen 40 meter intervals on the south side of the road, therefore, the driveway is located at number 27 on the diagram.

27

4. The final number on the Municipal Address represents the Twp Rd number that meets your driveway (Twp Rd 74).

Twp Rd 74

263027
TWP RD 74