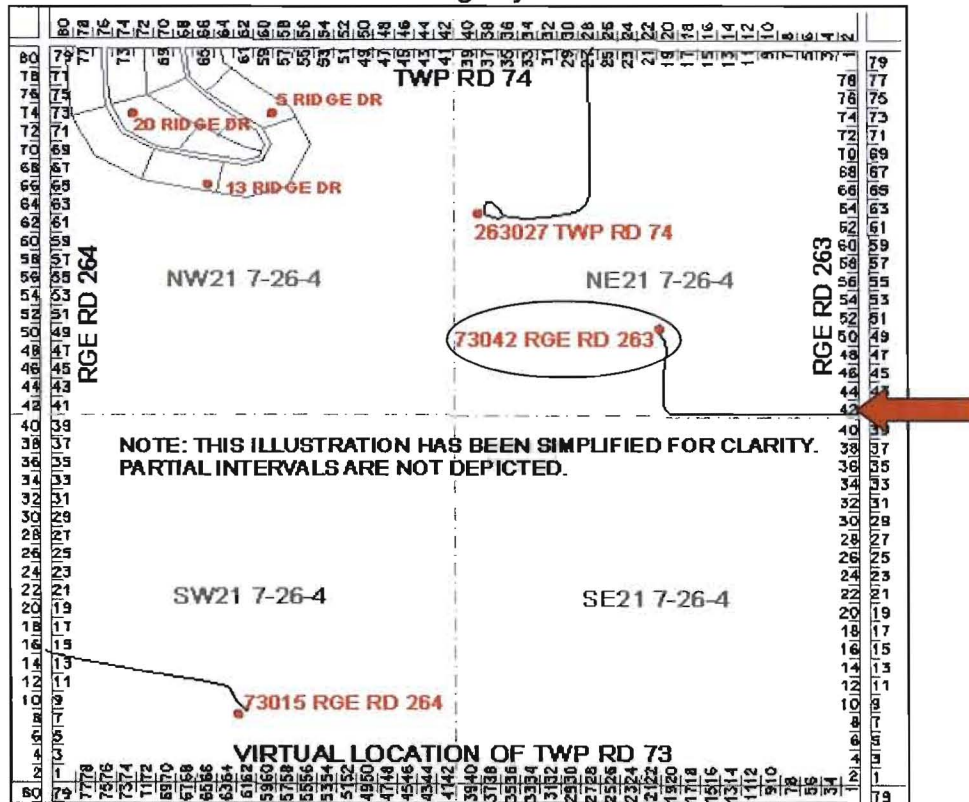


Steps to determine your Municipal Address:

First determine whether your driveway meets with a range road or township road.

**IF YOUR DRIVEWAY MEETS A RANGE ROAD (see illustration and steps below).**

#### Standard 40 Meter Grid Addressing Layout



1. Start at the southern intersection of the Twp Rd and Rge Rd you are located on (Twp Rd 73 and Rge Rd 263). The Twp Rd represents the first characters of your Municipal Address.

73

2. The 0 represents a character to separate the Twp Rd and 40 meter interval number.

0

3. Going NORTH from the intersection towards the residence count the number of 40 meter intervals it takes to reach your driveway. The number of intervals represents the location along the Rge Rd (even numbers on the west side of the road and odd numbers on the east side of the road). We have determined the number of 40 meter intervals through the use of our GIS system. In this example, the driveway is twenty-one 40 meter intervals on the west side of the road, therefore, the driveway is located at number 42 on the diagram.

42

4. The final number on the Municipal Address represents the Rge Rd number that meets your driveway (Rge Rd 263);

Rge Rd 263

73042

RGE RD 263

(over)