



MD of Willow Creek

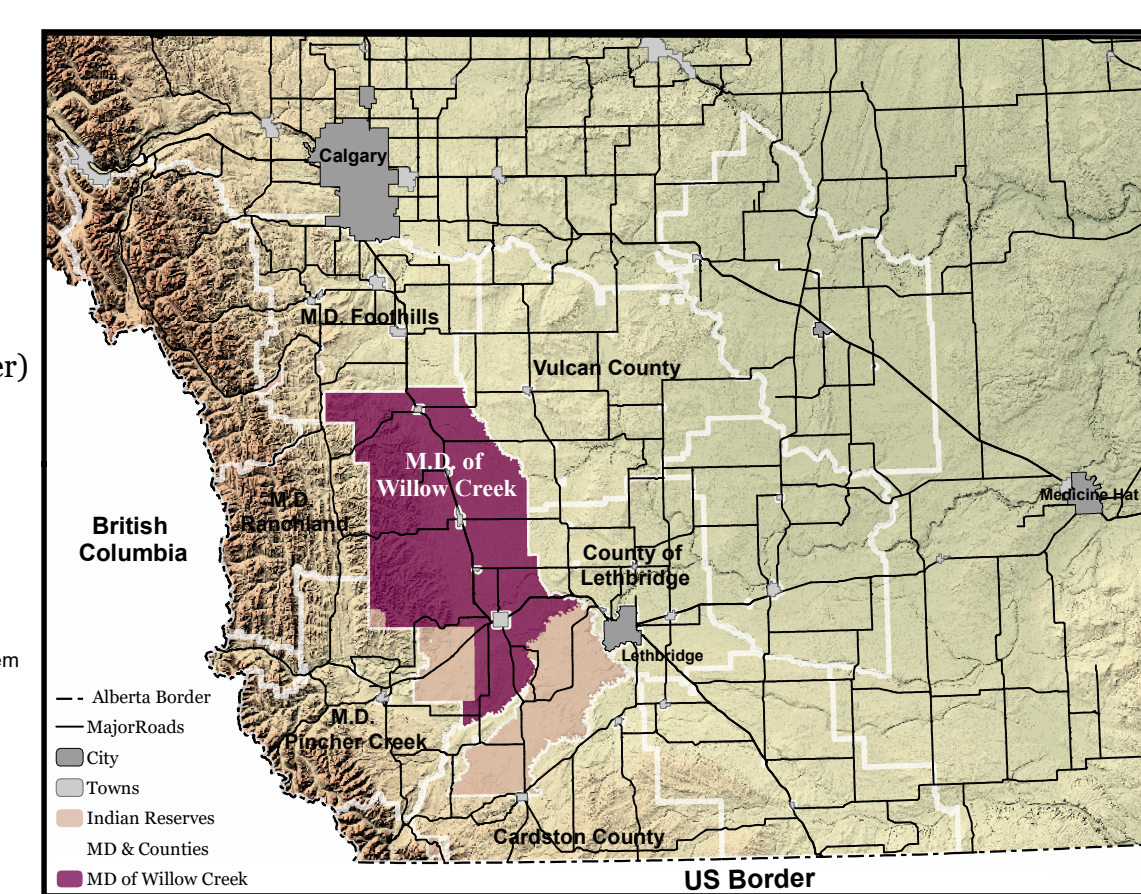
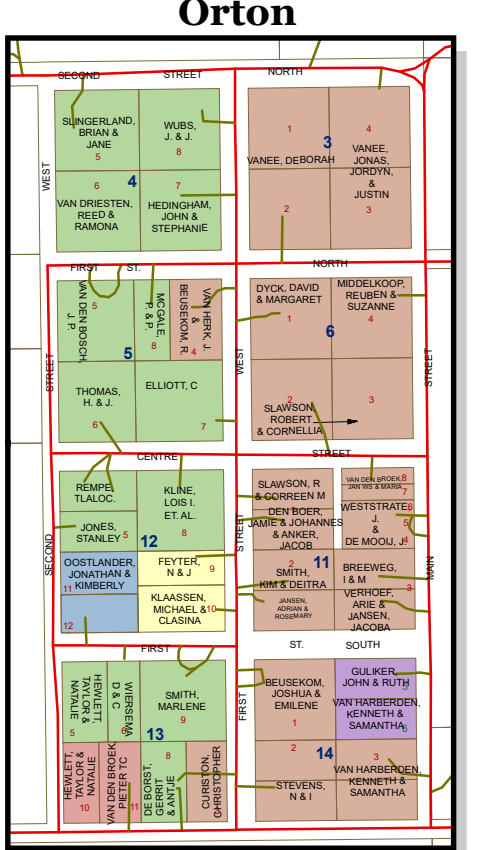
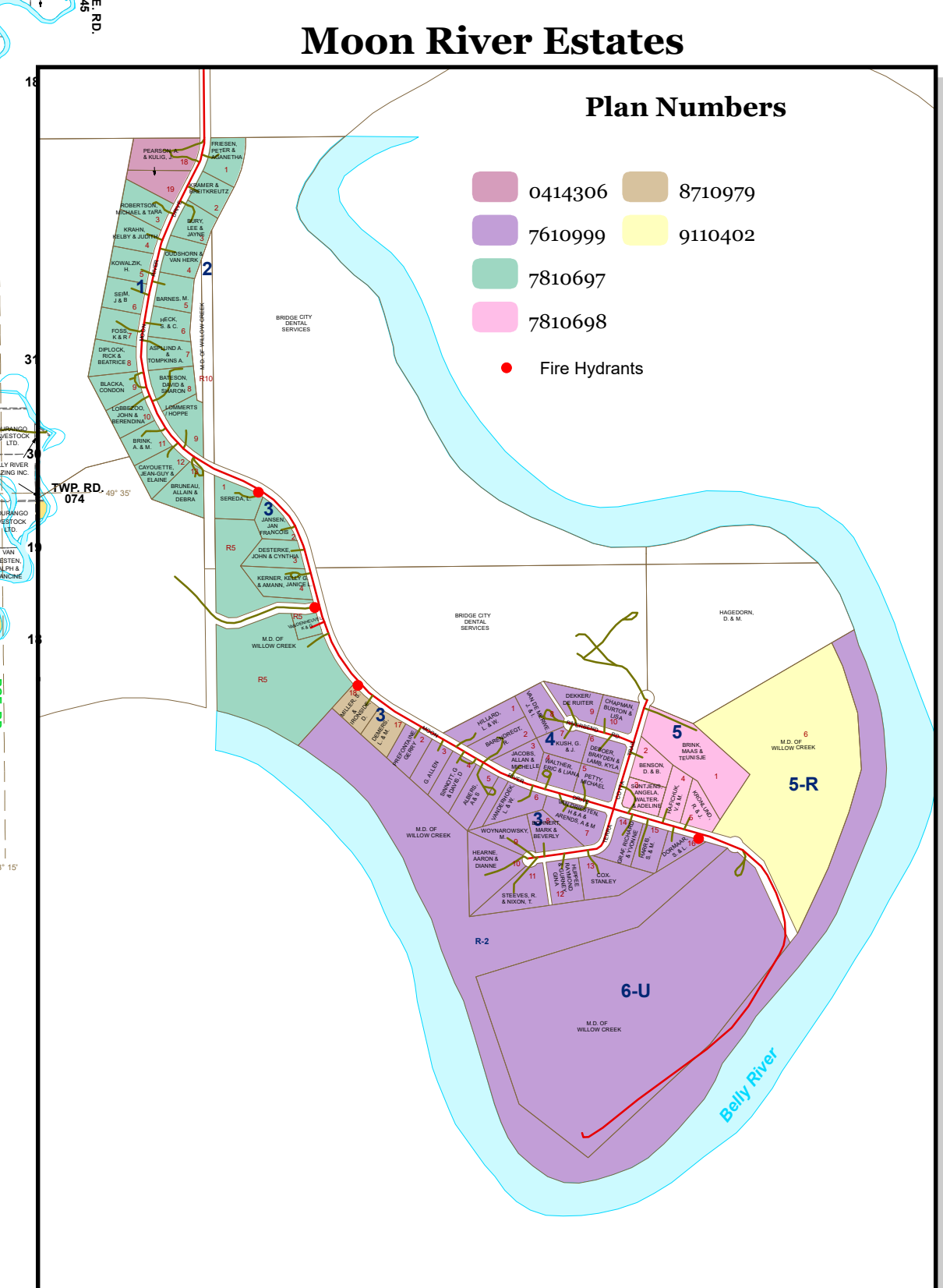
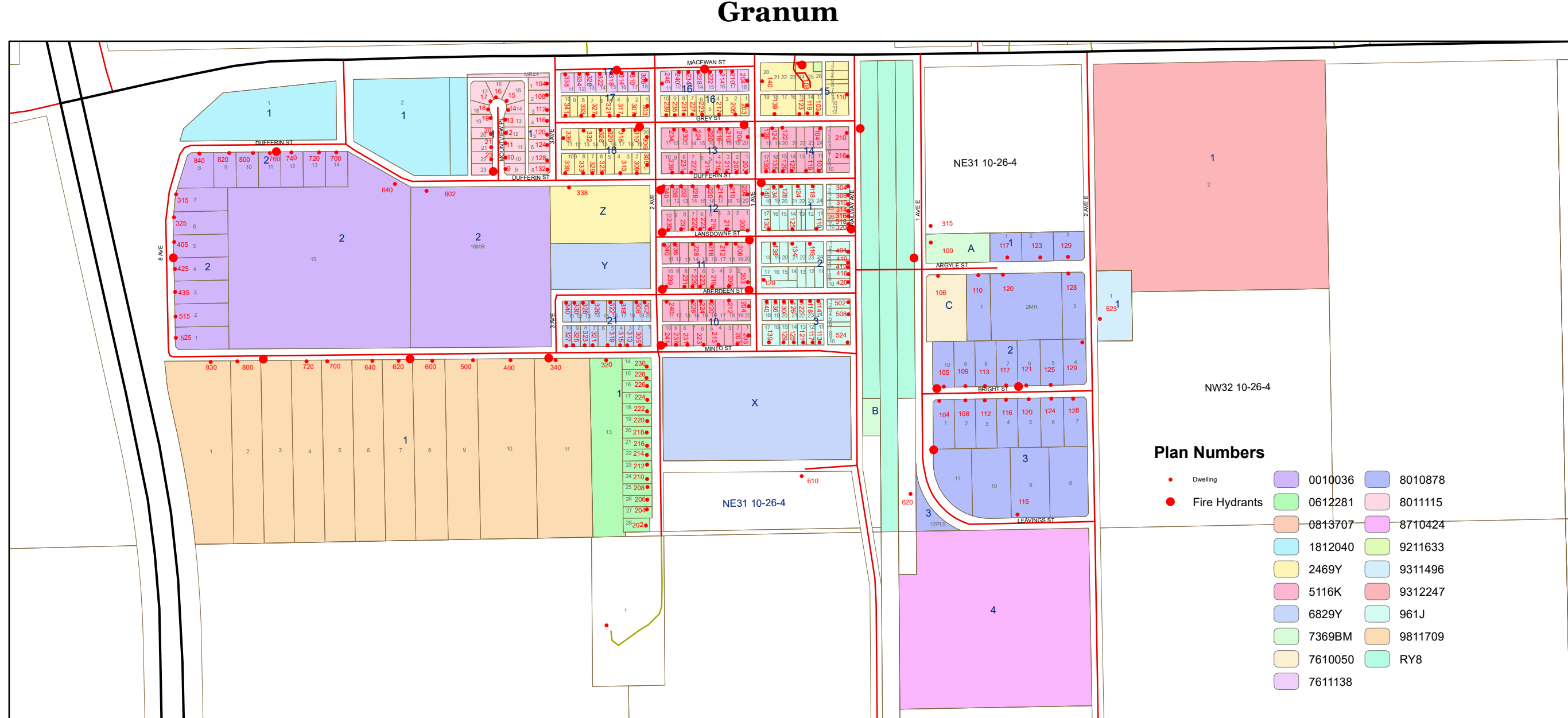
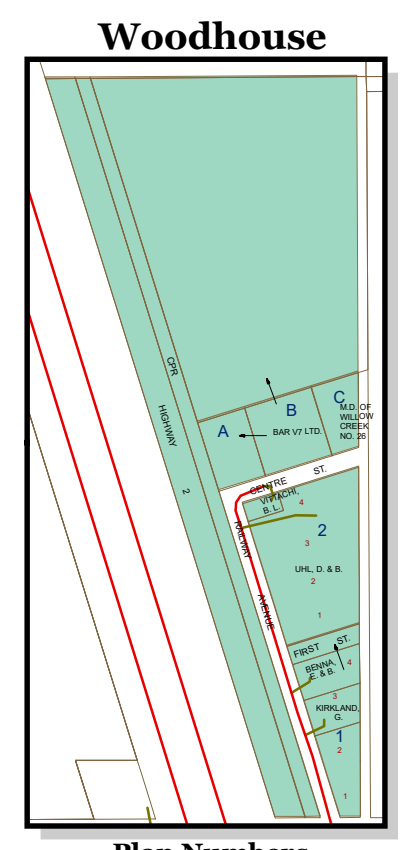
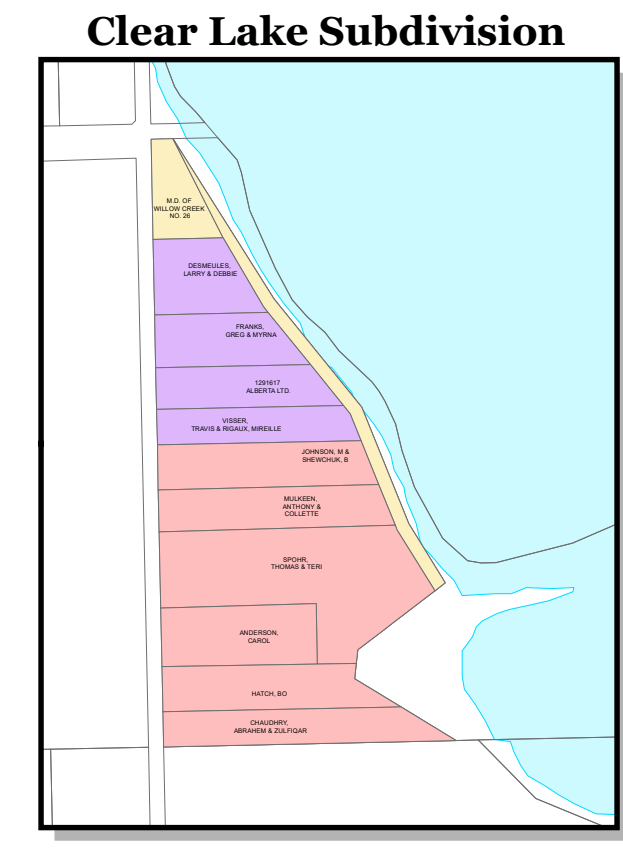
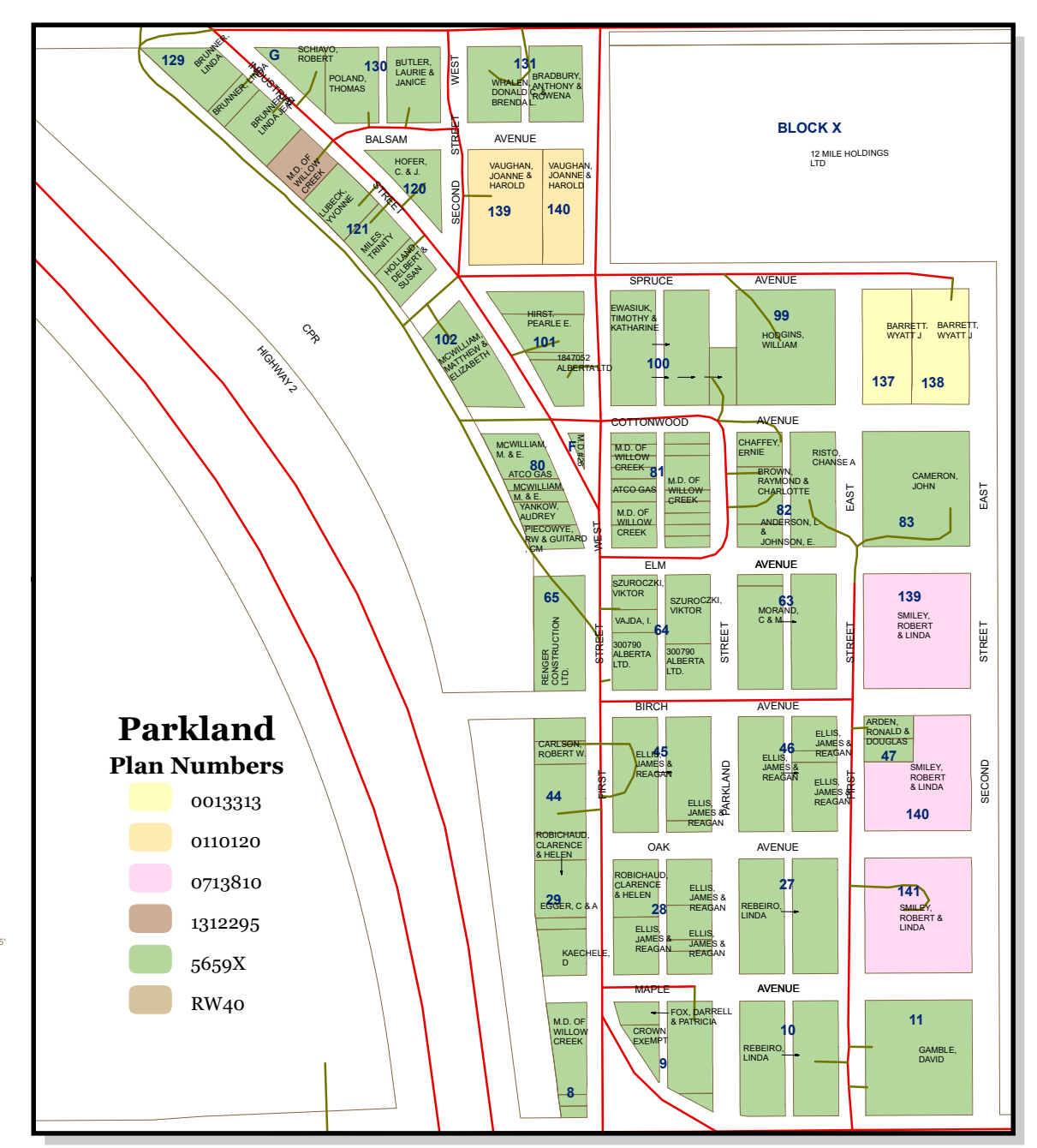
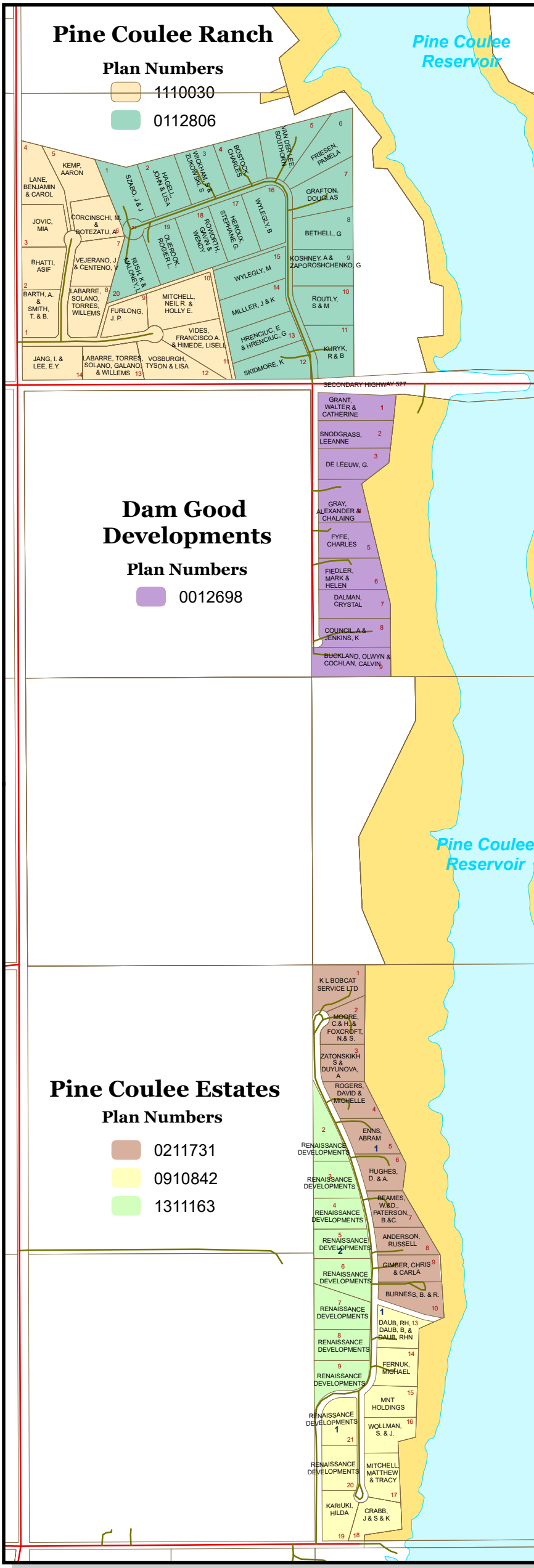
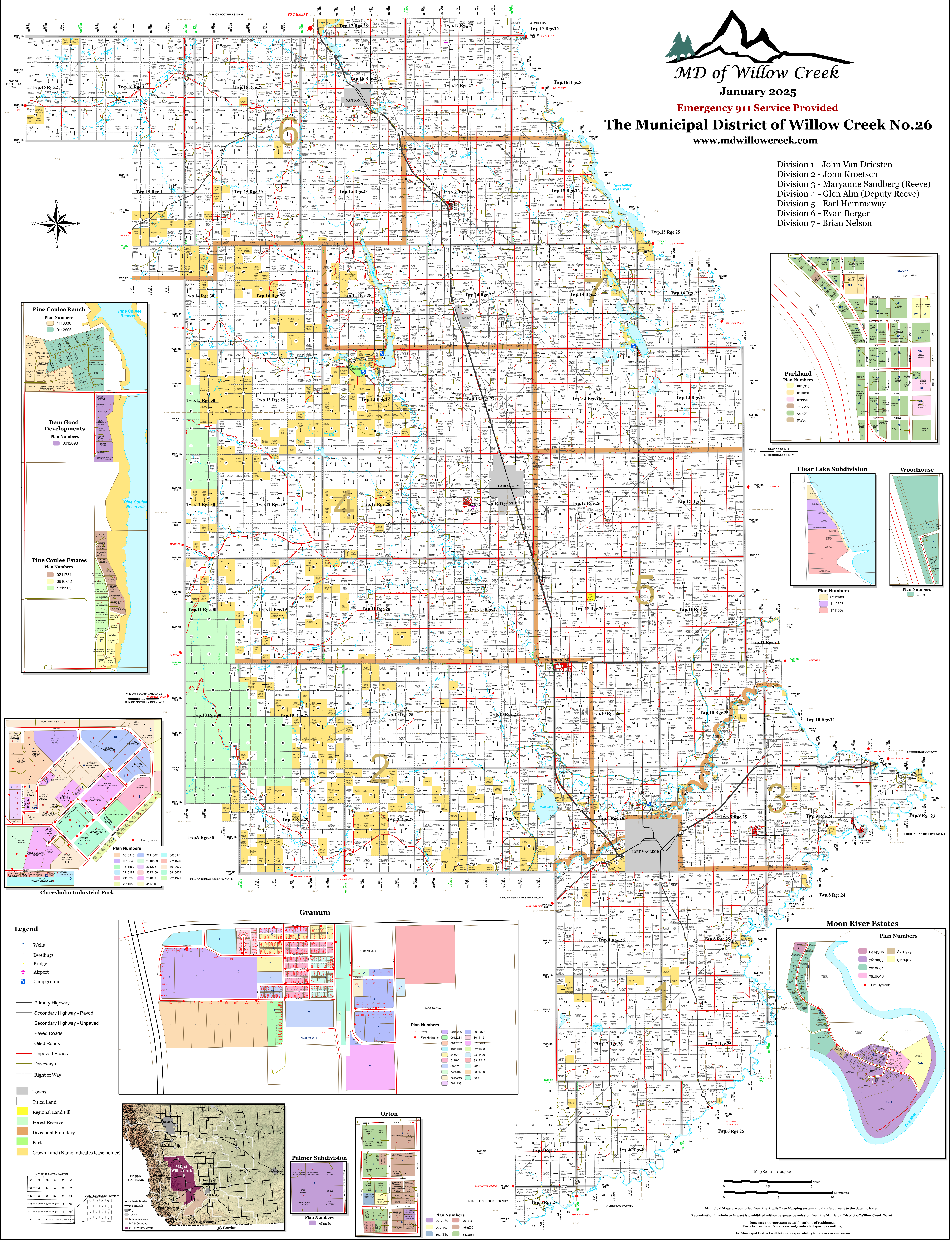
January 2025

Emergency 911 Service Provided

The Municipal District of Willow Creek No.26

www.mdwillowcreek.com

- Division 1 - John Van Driesten
- Division 2 - John Kroetsch
- Division 3 - Maryanne Sandberg (Reeve)
- Division 4 - Glen Alm (Deputy Reeve)
- Division 5 - Earl Hemmaway
- Division 6 - Evan Berger
- Division 7 - Brian Nelson



- Legend**
- Wells
 - Dwellings
 - Bridge
 - Airport
 - Campground
 - Primary Highway
 - Secondary Highway - Paved
 - Secondary Highway - Unpaved
 - Paved Roads
 - Oiled Roads
 - Unpaved Roads
 - Driveways
 - Right of Way
 - Towns
 - Titled Land
 - Regional Land Fill
 - Forest Reserve
 - Divisional Boundary
 - Park
 - Crown Land (Name indicates lease holder)

Township Survey System

31	32	33	34	35	36
14	15	16	17	18	19
10	11	12	13	14	15
7	8	9	10	11	12
4	5	6	7	8	9
1	2	3	4	5	6

Legal Subdivision System

- Alberta Border
- Manitoba Border
- City
- Indian Reserves
- MD of Willow Creek
- MD of Ranchland No. 66
- MD of Fencher Creek No. 1
- MD of Willow Creek
- US Border

Map Scale 1:102,000

Municipal Maps are compiled from the Atlas Base Mapping system and data is current to the date indicated. Reproduction in whole or in part is prohibited without express permission from the Municipal District of Willow Creek No. 26. Data may not represent actual locations of residences. Parcels less than 40 acres are only indicated space permitting. The Municipal District will take no responsibility for errors or omissions.