



MD of Willow Creek

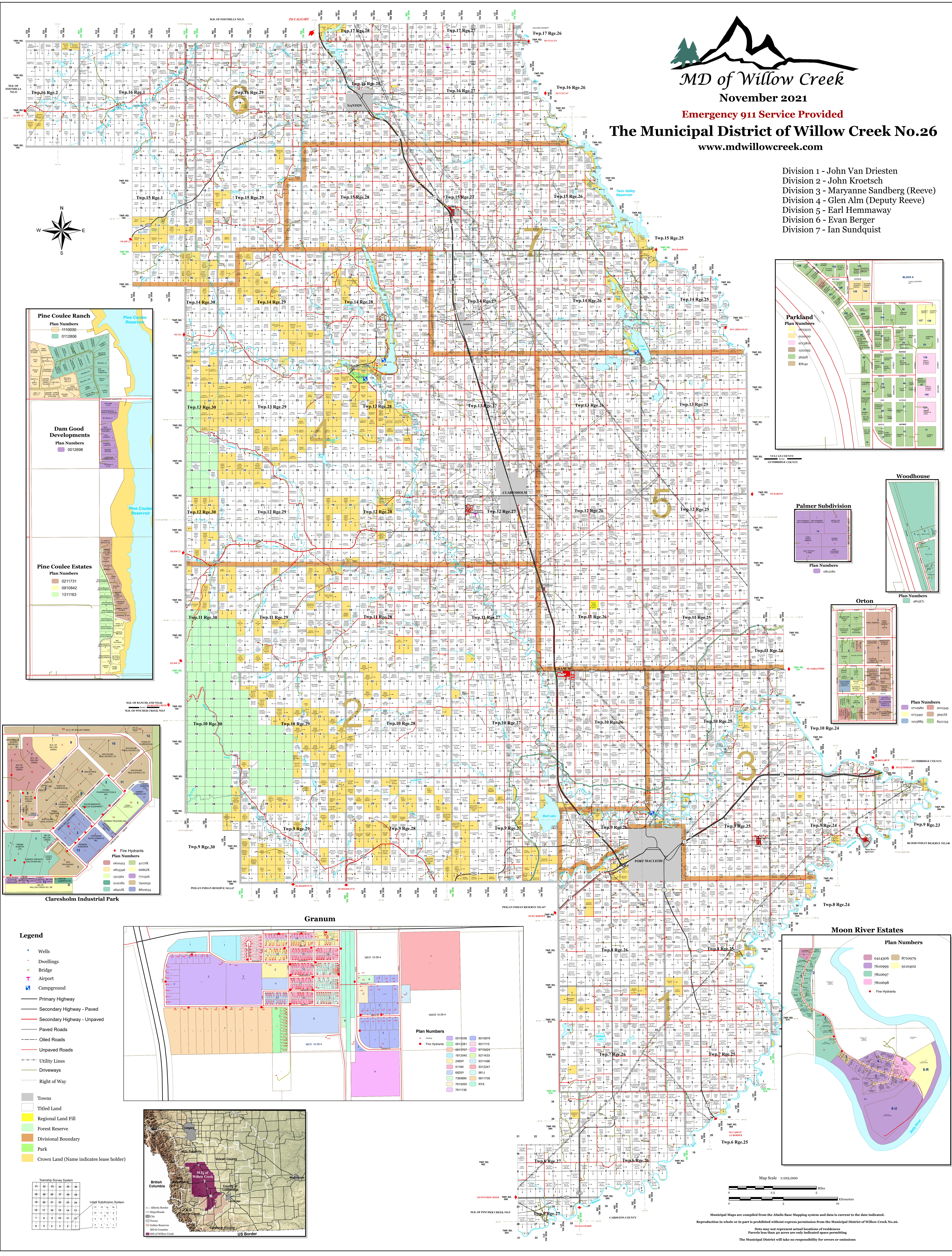
November 2021

Emergency 911 Service Provided

The Municipal District of Willow Creek No.26

www.mdwillowcreek.com

- Division 1 - John Van Driesten
- Division 2 - John Kroetsch
- Division 3 - Maryanne Sandberg (Reeve)
- Division 4 - Glen Alm (Deputy Reeve)
- Division 5 - Earl Hemmaway
- Division 6 - Evan Berger
- Division 7 - Ian Sundquist



Pine Coulee Ranch
Plan Numbers
1110030
0112806

Dam Good Developments
Plan Numbers
0012698

Pine Coulee Estates
Plan Numbers
0211731
0910842
1311163

Parkland
Plan Numbers
0112113
0112120
0112110
1312005
0655X
01W40

Woodhouse
Plan Numbers
0102100

Palmer Subdivision
Plan Numbers
0102100

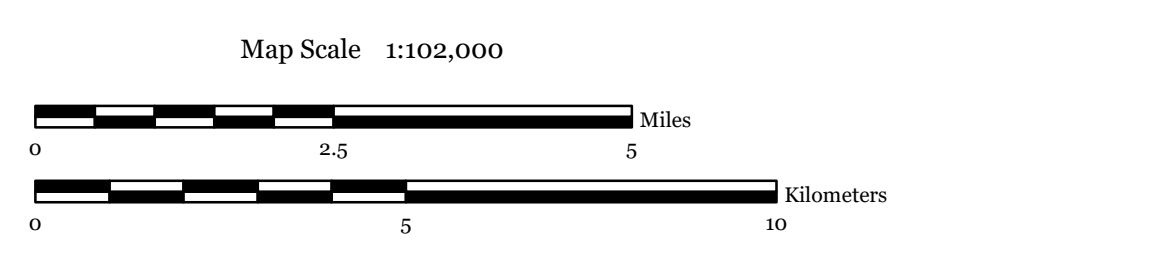
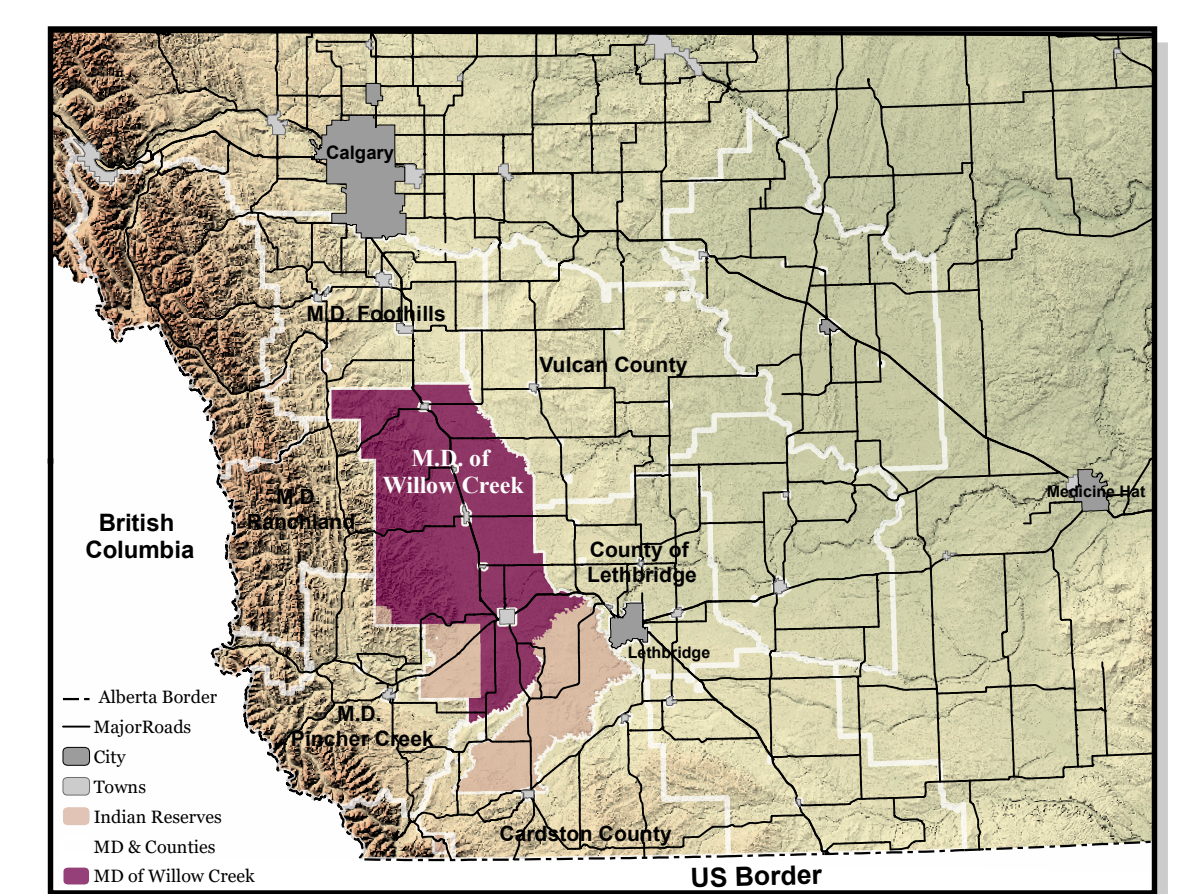
Orton
Plan Numbers
0715980 2015415
0715491 369D1
0103886 841134

Claresholm Industrial Park
Fire Hydrants
Plan Numbers
0680455 41573K
0815345 688JJK
1311584 7715236
2100382 7900332
284037K 8800514

Granum
Plan Numbers
0110336 0110876
0812811 0211125
0813707 0710424
1812048 0211633
24657 0311496
51104 0312247
6820Y 961J
7368M 0811709
761000D RY6
7611138

Moon River Estates
Plan Numbers
0414306 8710979
7610999 0110402
7810697
7810698
Fire Hydrants

- Legend**
- Wells
 - Dwellings
 - Bridge
 - Airport
 - Campground
 - Primary Highway
 - Secondary Highway - Paved
 - Secondary Highway - Unpaved
 - Paved Roads
 - Oiled Roads
 - Unpaved Roads
 - Utility Lines
 - Driveways
 - Right of Way
 - Towns
 - Titled Land
 - Regional Land Fill
 - Forest Reserve
 - Divisional Boundary
 - Park
 - Crown Land (Name indicates lease holder)



Municipal Maps are compiled from the Atlas Base Mapping system and data is current to the date indicated.
 Reproduction in whole or in part is prohibited without express permission from the Municipal District of Willow Creek No. 26.
 Dots may not represent actual locations of residences
 Parcels less than 40 acres are only indicated space permitting
 The Municipal District will take no responsibility for errors or omissions