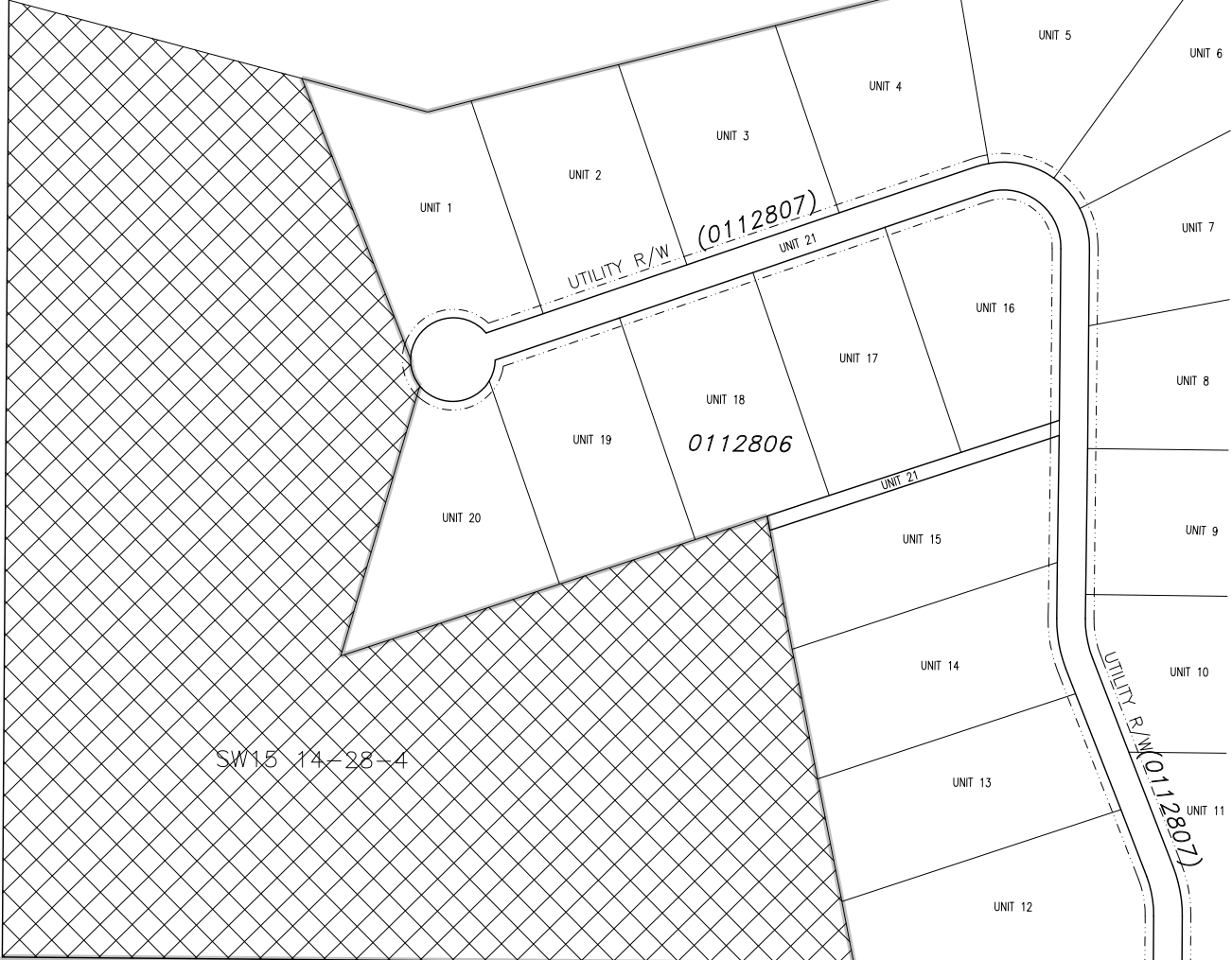


NE16

NW15 14-28-4

RES R/W
9011974 NE15

SW15 14-28-4



SE16 14-28-4

SW15 14-28-4

HIGHWAY 527 Road Widening Plan 8610499

NE9

NW10 14-28-4

LOT 1
0012698

LAND USE DISTRICT REDESIGNATION SCHEDULE 'A'



FROM: RESERVOIR VICINITY "RV"
TO: GROUPED COUNTRY RESIDENTIAL "GCR"

PORTION OF SW 1/4 SEC 15, TWP 14, RGE 28, W 4 M
MUNICIPALITY; M.D. OF WILLOW CREEK No. 26
DATE; APRIL 16, 2007



OLDMAN RIVER REGIONAL SERVICES COMMISSION

0 Metres 100 200 300 400



April 17, 2007 N:\Willow-Creek-MD\Willow-Creek- Land Use Redesignations\WCreek-SW 15-14-28-4.dwg

MAP PREPARED BY:
OLDMAN RIVER REGIONAL SERVICES COMMISSION
3105 16th AVENUE NORTH, LETHBRIDGE, ALBERTA
TEL. 329-1344 T1H 5E8
"NOT RESPONSIBLE FOR ERRORS OR OMISSIONS"